



Latest functions & future development for CADMATIC Hull and Outfitting

Software Solutions

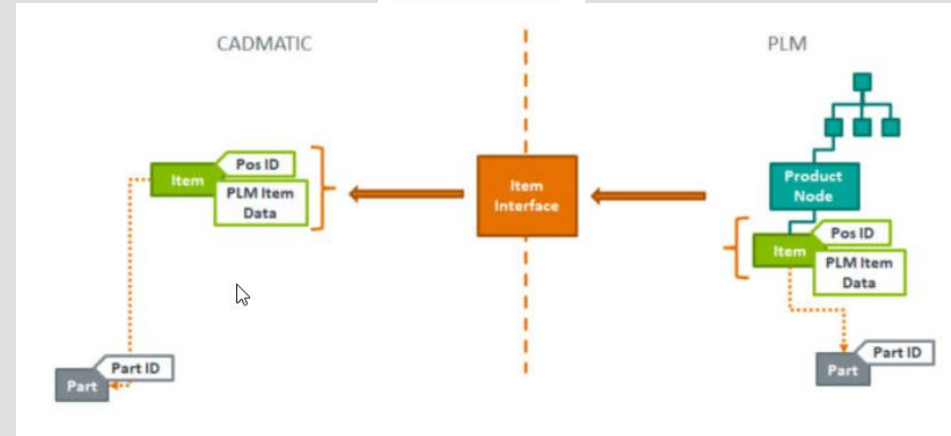
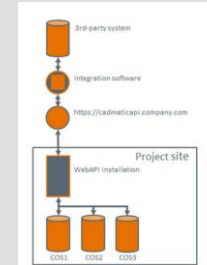
Feel Empowered

 **CADMATIC**

Web API, Its all about integrations

Connect your PLM and Document management to CADMATIC

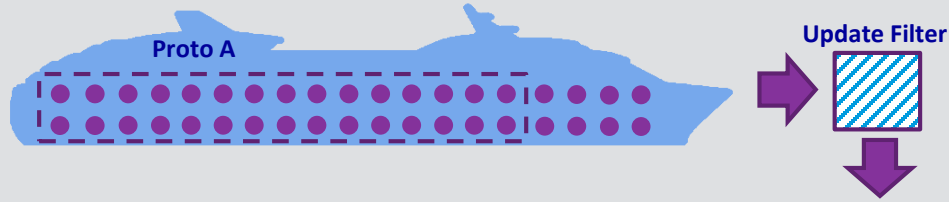
- New way to interact 3d Model data with other systems
- Webapi enables external systems to:
 - Control Items from external systems
 - One source of truth. Data is same in different systems
 - Share documents within PLM systems with document metadata
 - Reach model data from PLM systems



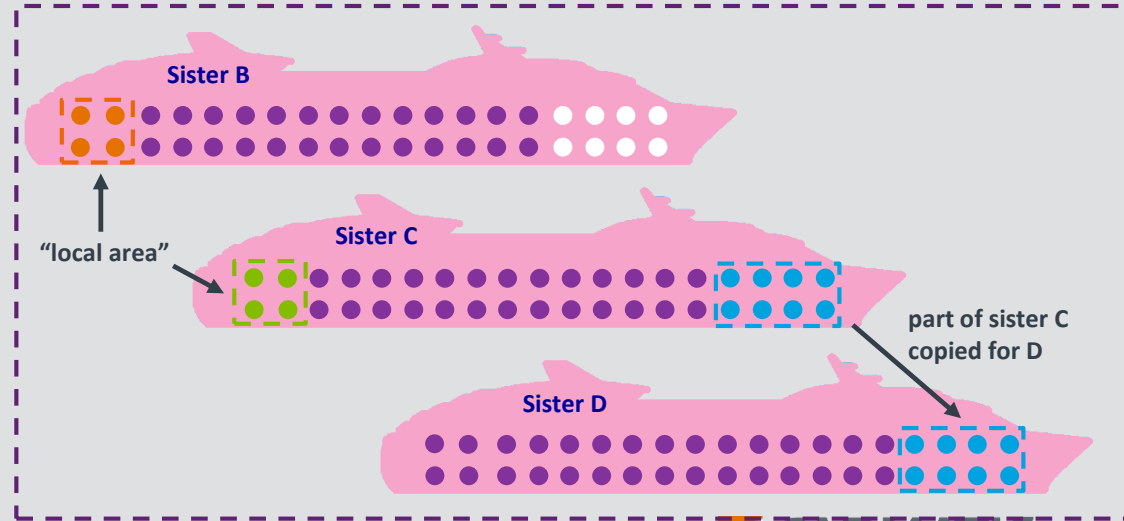
Outfitting

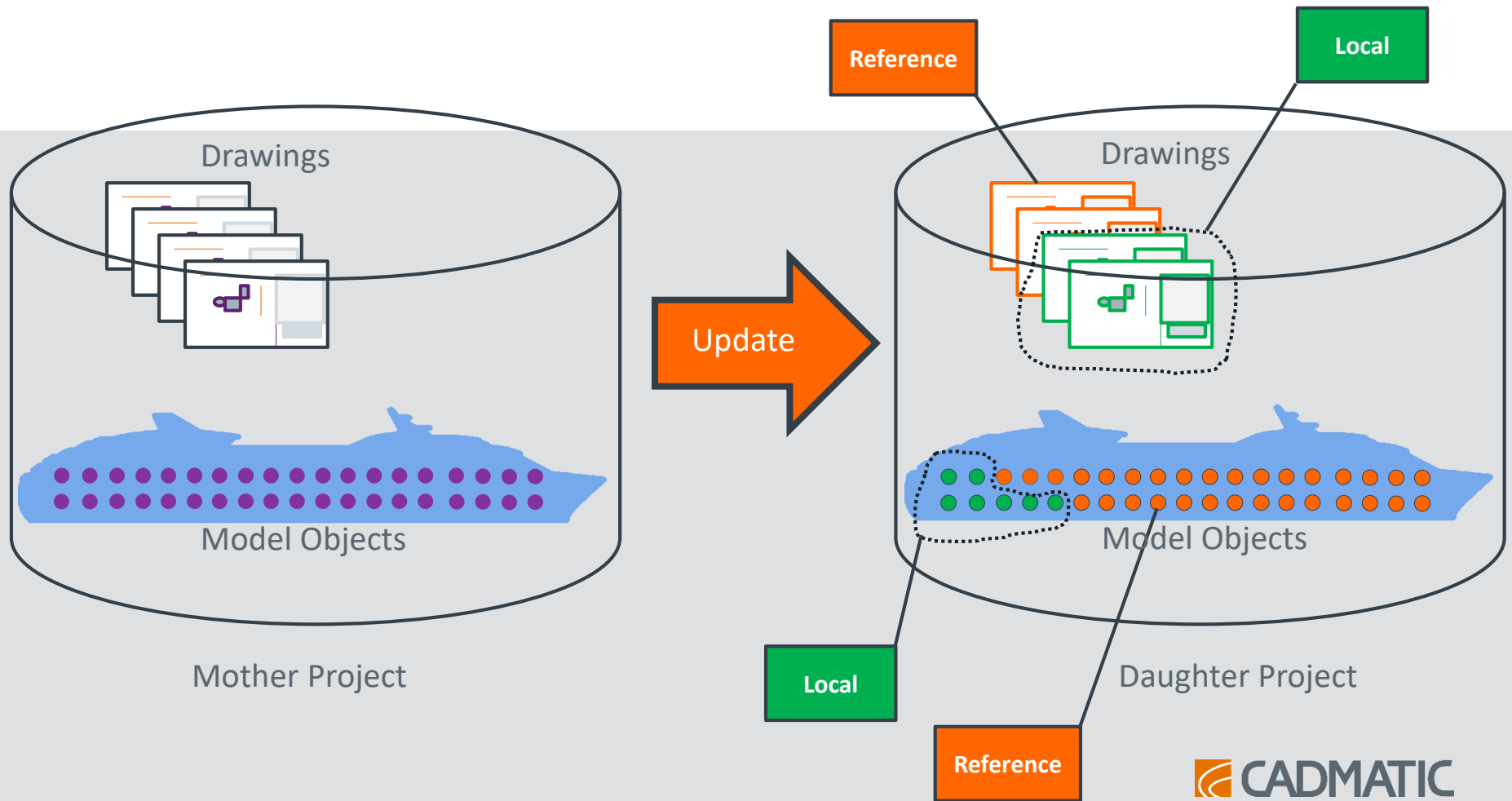
Sister Ship for share the design to series of ships

Outfitting



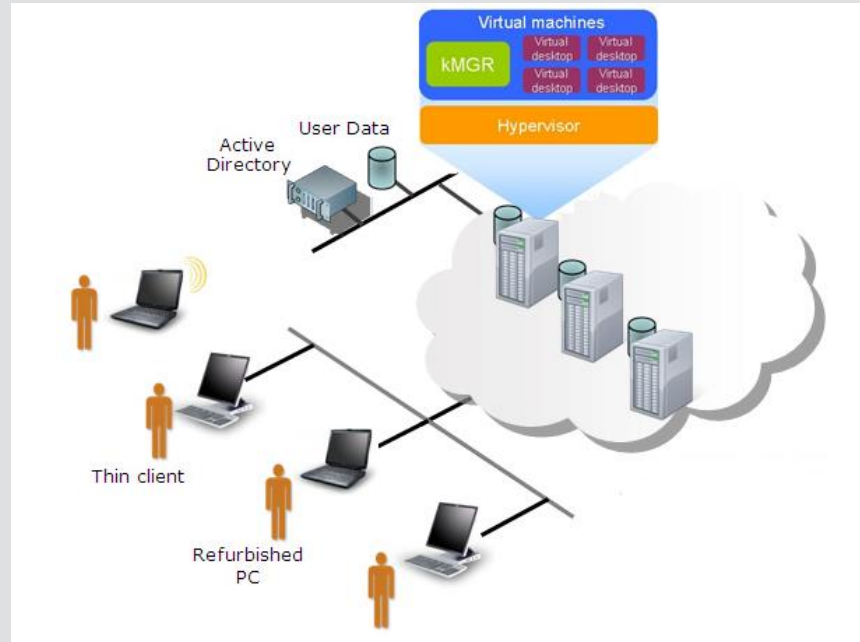
Efficient functionality to support concurrent design activity for ship series.





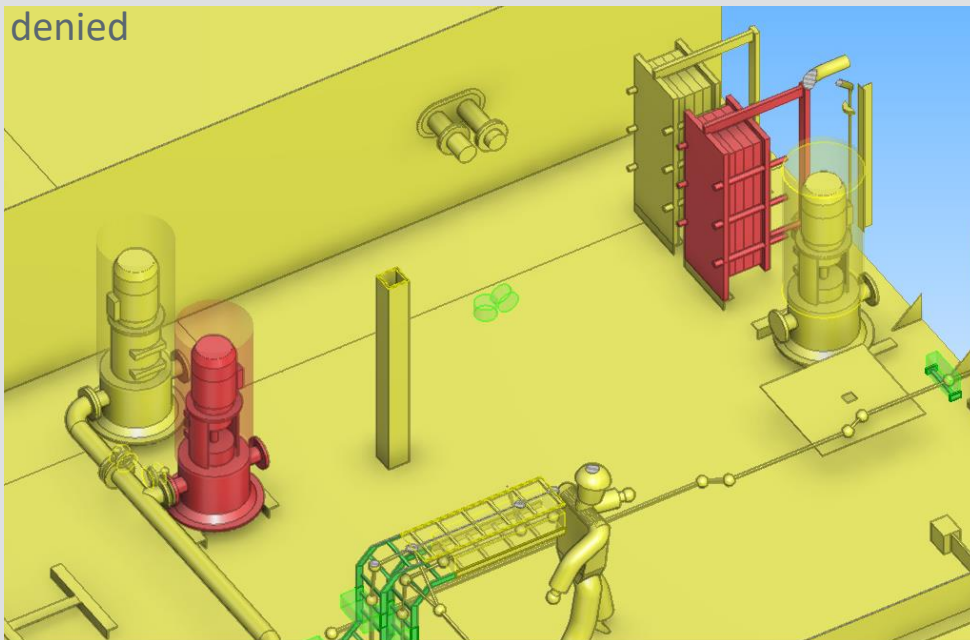
Going for virtual environment?

- We have improved the virtual desktop usage.
- Now it is possible to work with virtual environment with good performance.
- Improves data security and system stability in big and small companies



Secure for design. Rule based design permissions

- It is now possible to define rules by area, design department or even object wise.
- Rule will apply to model creation, modification and deletion.
- For example: Piping designer can only edit piping process related model objects (access to electrical denied)



Set Model Area Access Rights

Allowed Edit Box

Min	Max	
X: [-12000.0 mm]	74600.0 mm	<input type="button" value="Cover Model Area"/> <input type="button" value="Min (x, y, z)"/> <input type="button" value="Max (x, y, z)"/>
Y: [-5200.0 mm]	5200.0 mm	
Z: 200.0 mm	5400.0 mm	

Model Area Limits:
X : [-12000.0 mm, 74600.0 mm]
Y : [-5200.0 mm, 5200.0 mm]
Z : [200.0 mm, 5400.0 mm]

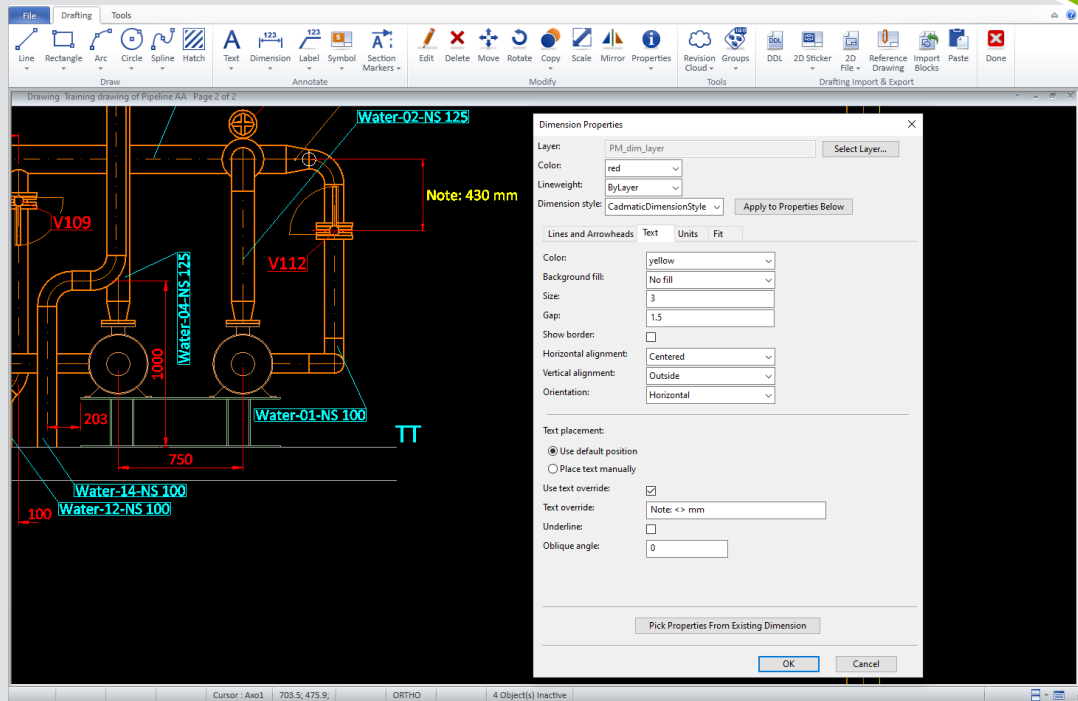
Model Area Access Rule

Piping Design

Objects Violating Access Rights
You own 0 objects violating the selected Model Area edit box
You own 0 objects violating the selected Model Area Access Rule

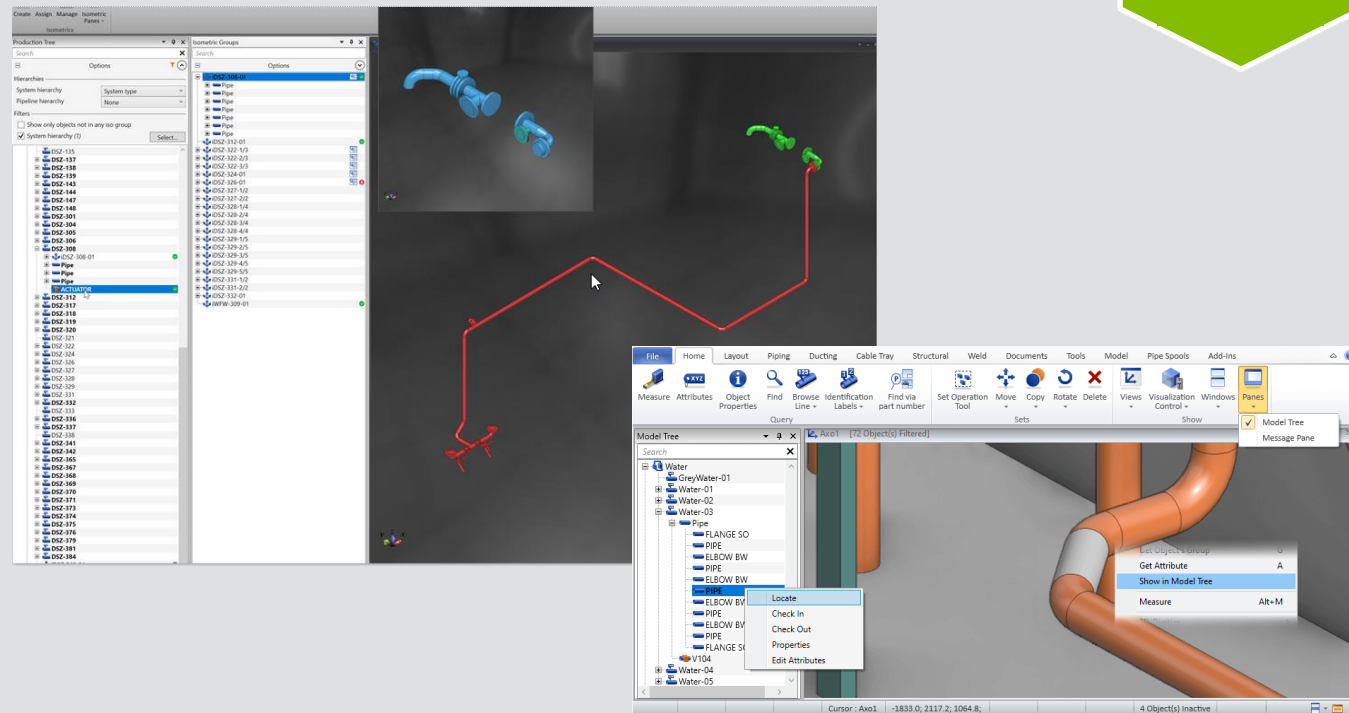
Modern new document editor which is fully based on DWG

- Even more user friendly and faster than before
- Lot of user improvement for example very autocad feeling dimensioning and drafting
- Full layer support
- Very good change visualization of lates changes



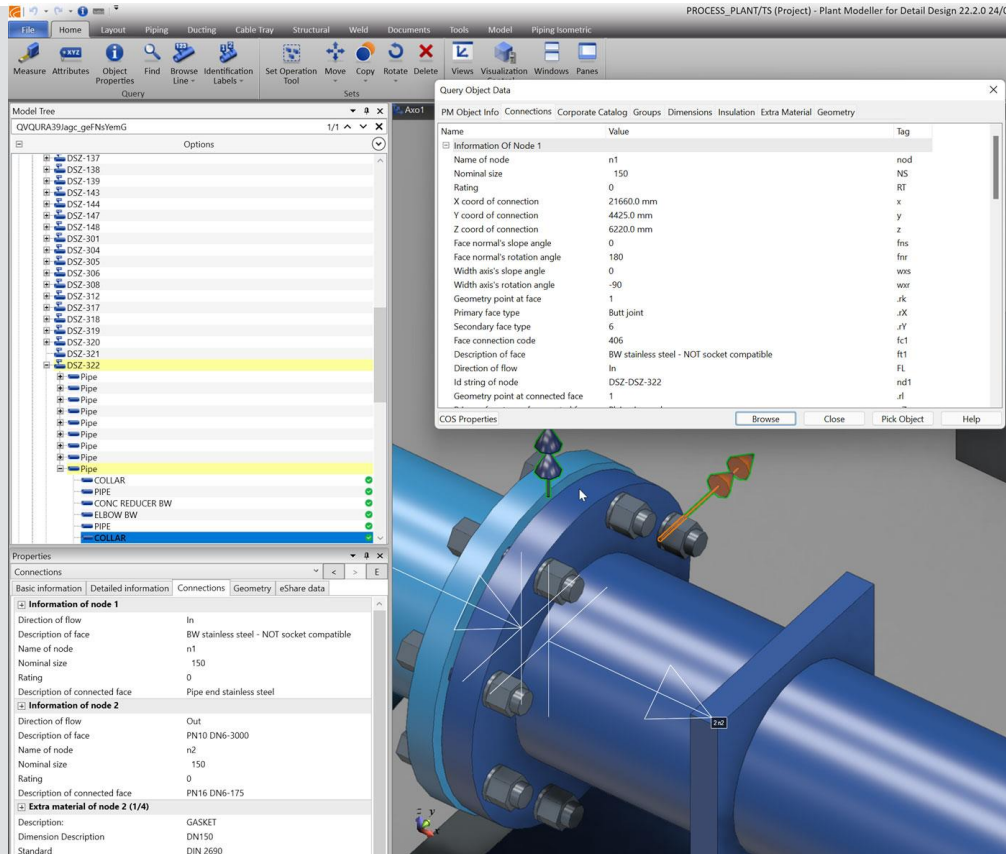
Streamlined work with model tree

- Model can be visualized and handled more structured way via model tree
- Objects can be easily located to or from hierarchy
- Isometry and other grouping can be done directly to hierarchy
- Users can also create own hierarchy types for specific purposes



Automatic determination for bolt length saves time and material

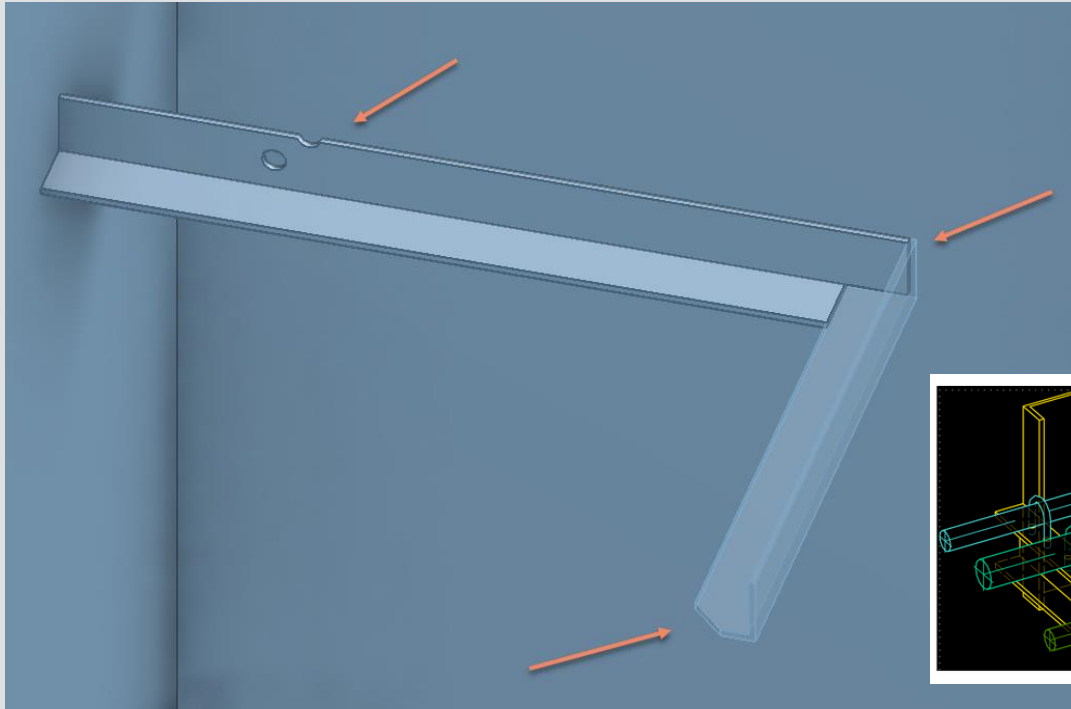
Outfitting



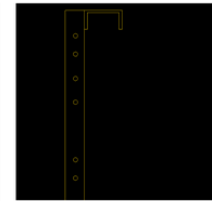
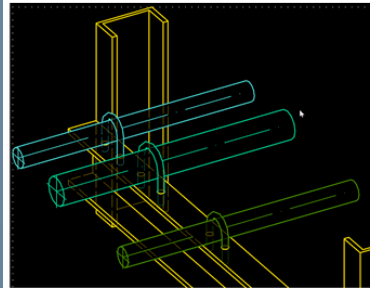
- Automatic bolt lengths will find out optimal length for bolts.
- Setting bolt sets are easier for administrator
- New visualization for bolts when those are queried.
- Bolt hole orientation is also visible in browser.

Detailed structural beams for better production documentation

Outfitting

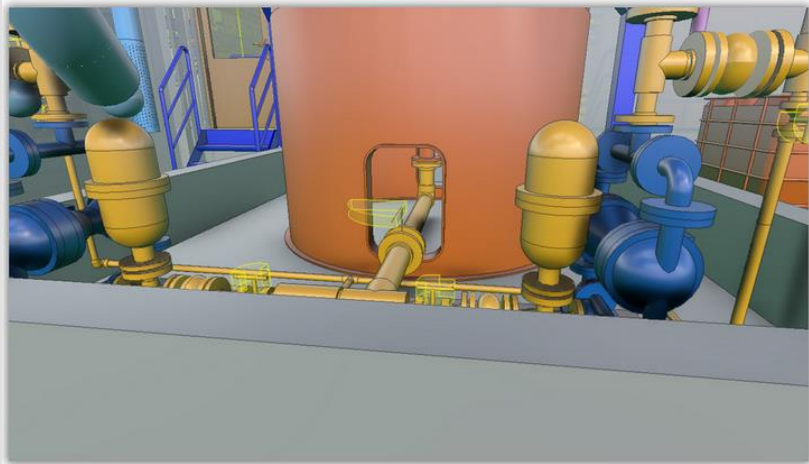


- Beam end cutting tool
- Setting bolt sets are easier for administrator
- New visualization for bolts when those are queried.
- Bolt hole orientation is also visible in browser.

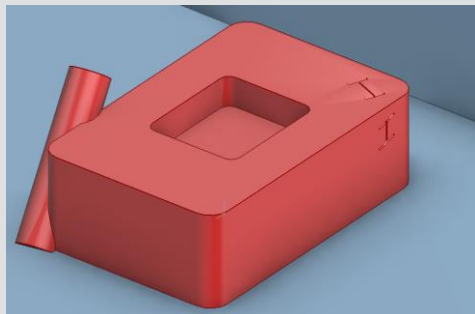


Boolean operations for more accurate 3D modeling

Outfitting

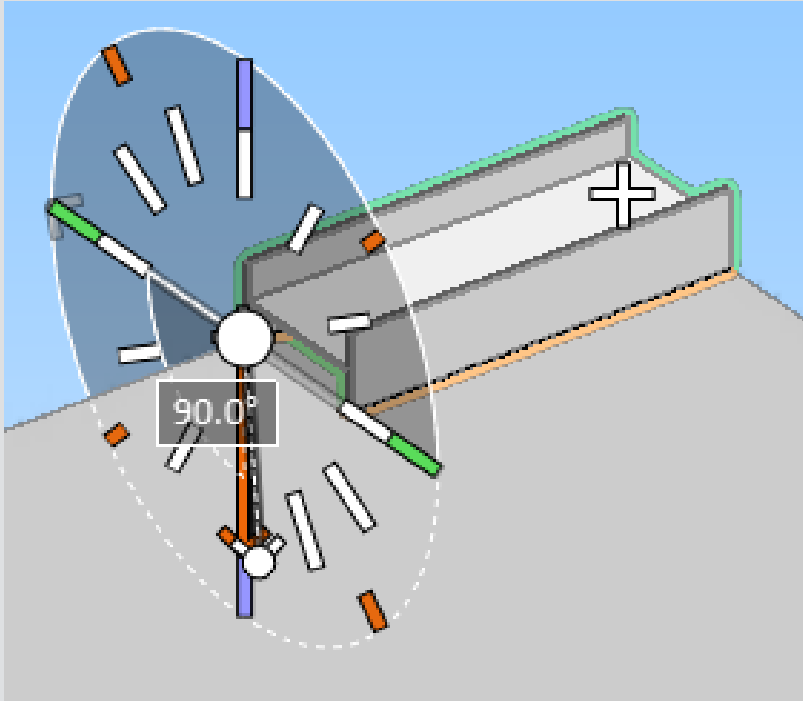


- Possible to cut primitive with other
- Inbound geometric shapes possible to create
- Possible also to merge primitives as one shape
- Beam cutouts easy to make
- Possible also to get intersection of shapes
- Reduces false alerts when passthrough holes are real holes



Structural modeling for beams are more userfriendly than ever

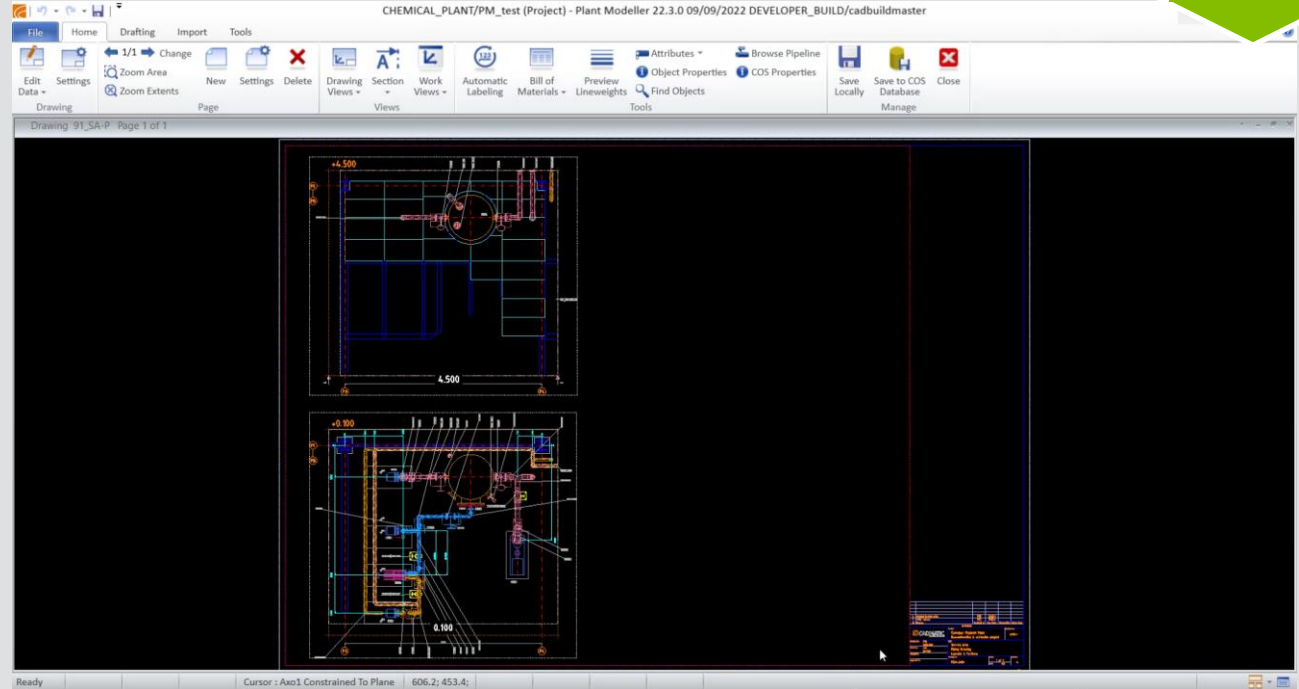
Outfitting



- Beam route is more straight forward and visual than before enabling fast and timesaving improvement.
- Faster learning curve
- Joining, cutting and mirroring easier to do

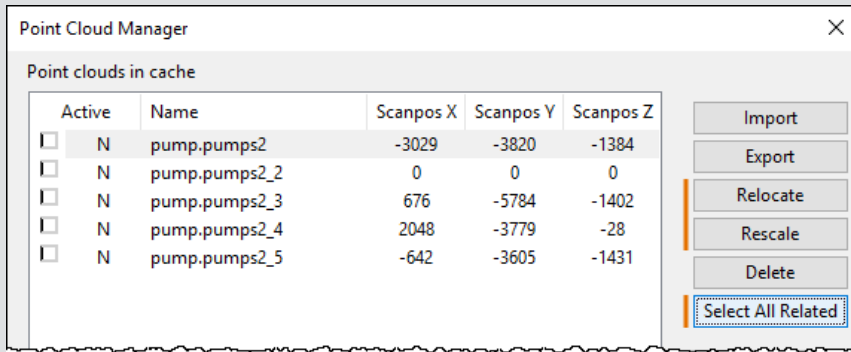
Section views created by default with section arrows

- Easier and faster document production



Laser scan modeller enhancements

- New model file format epx
- 1 GB ascii pointcloud will be truncated to 15 mb epx file



Feel Empowered

